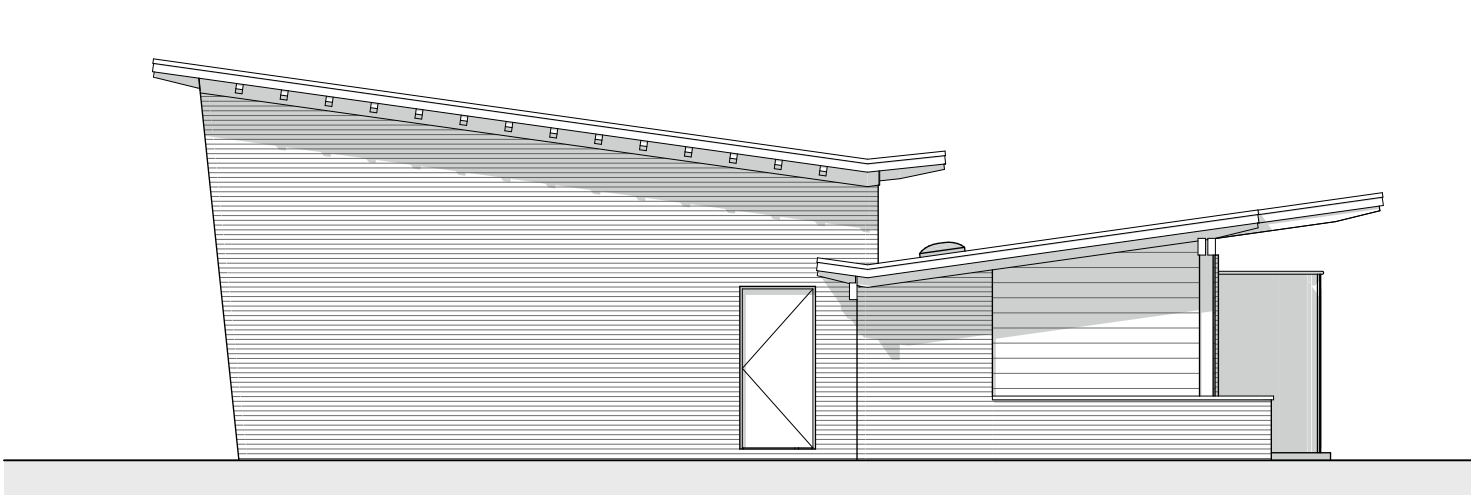
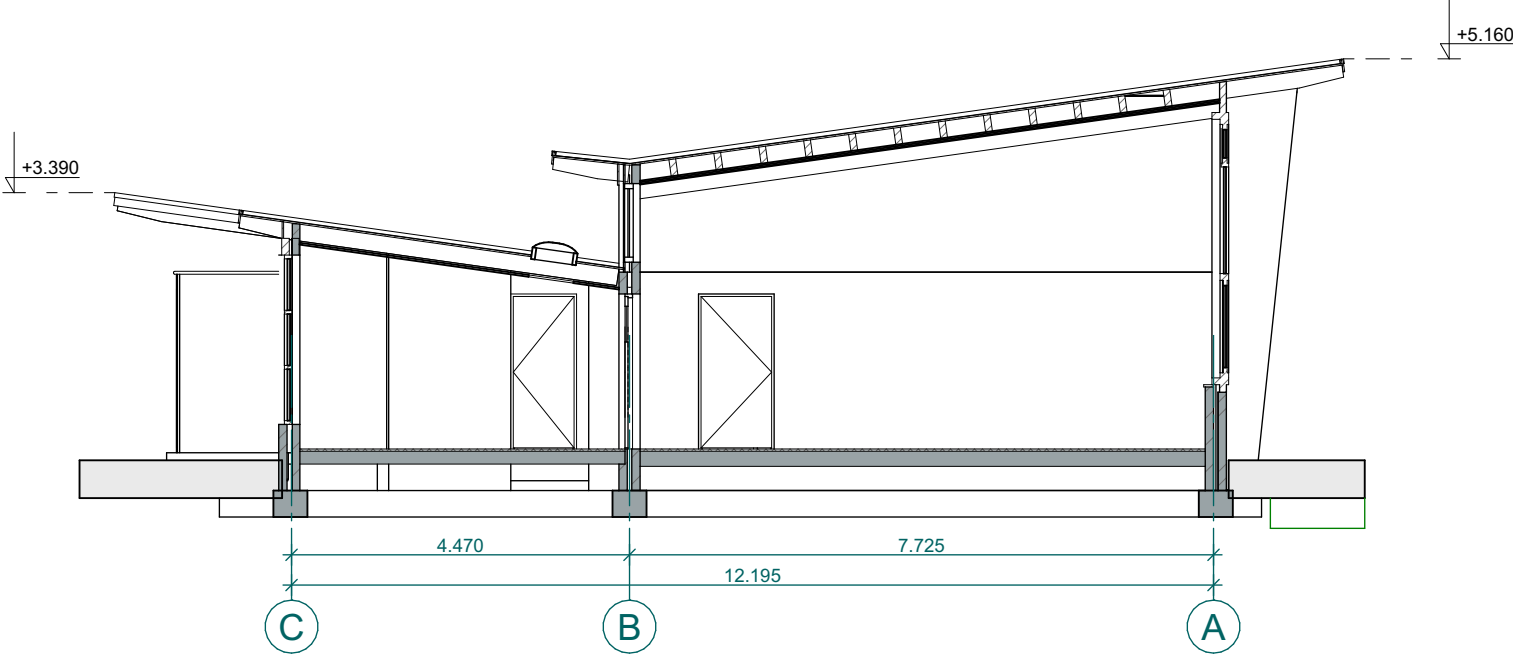




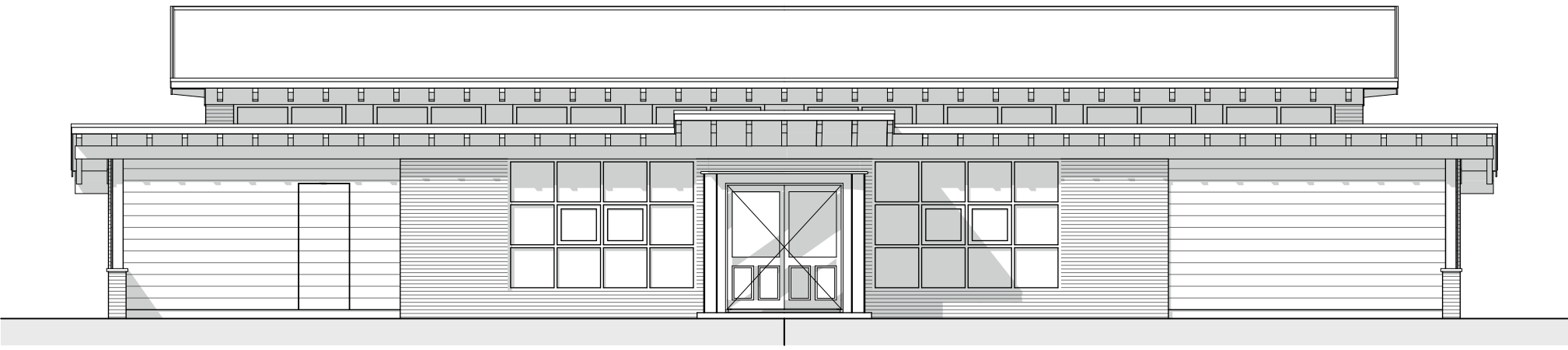
Voorgevel



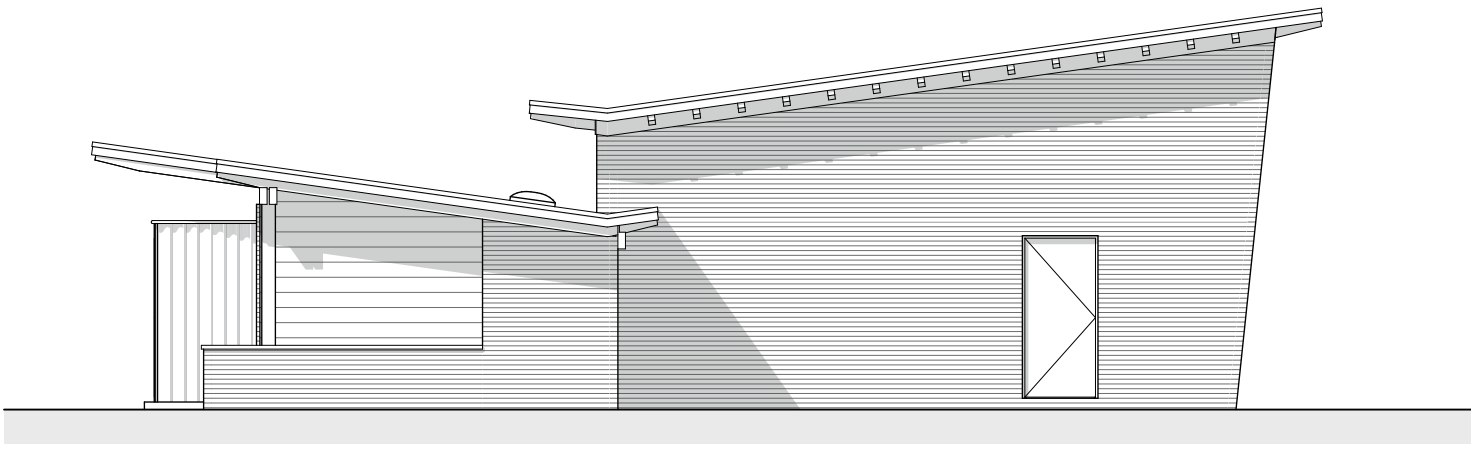
Rechtergevel



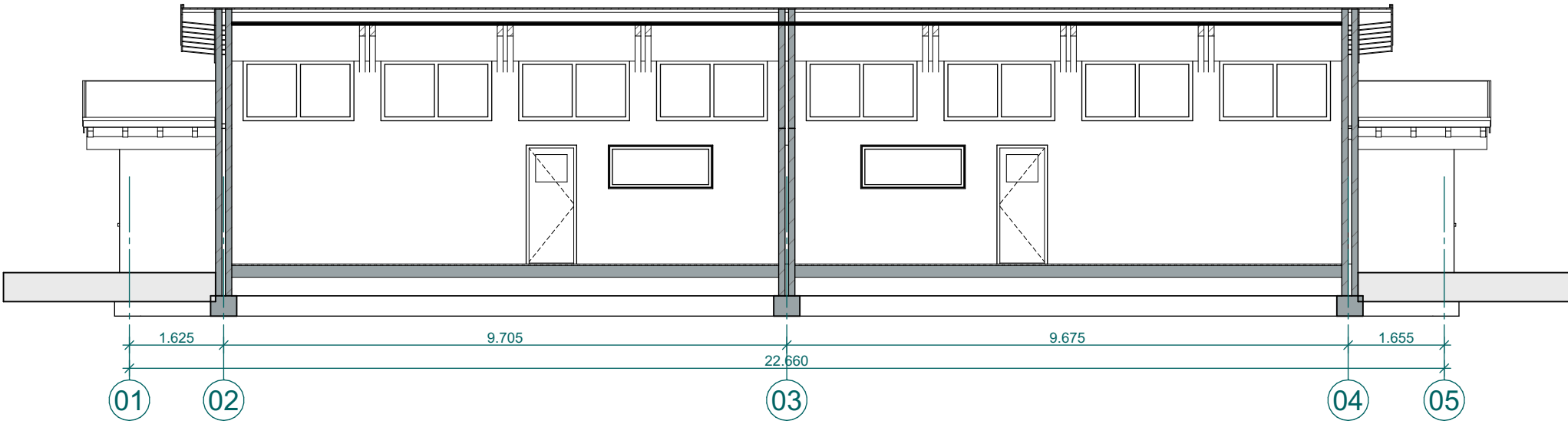
Doorsnede A-A



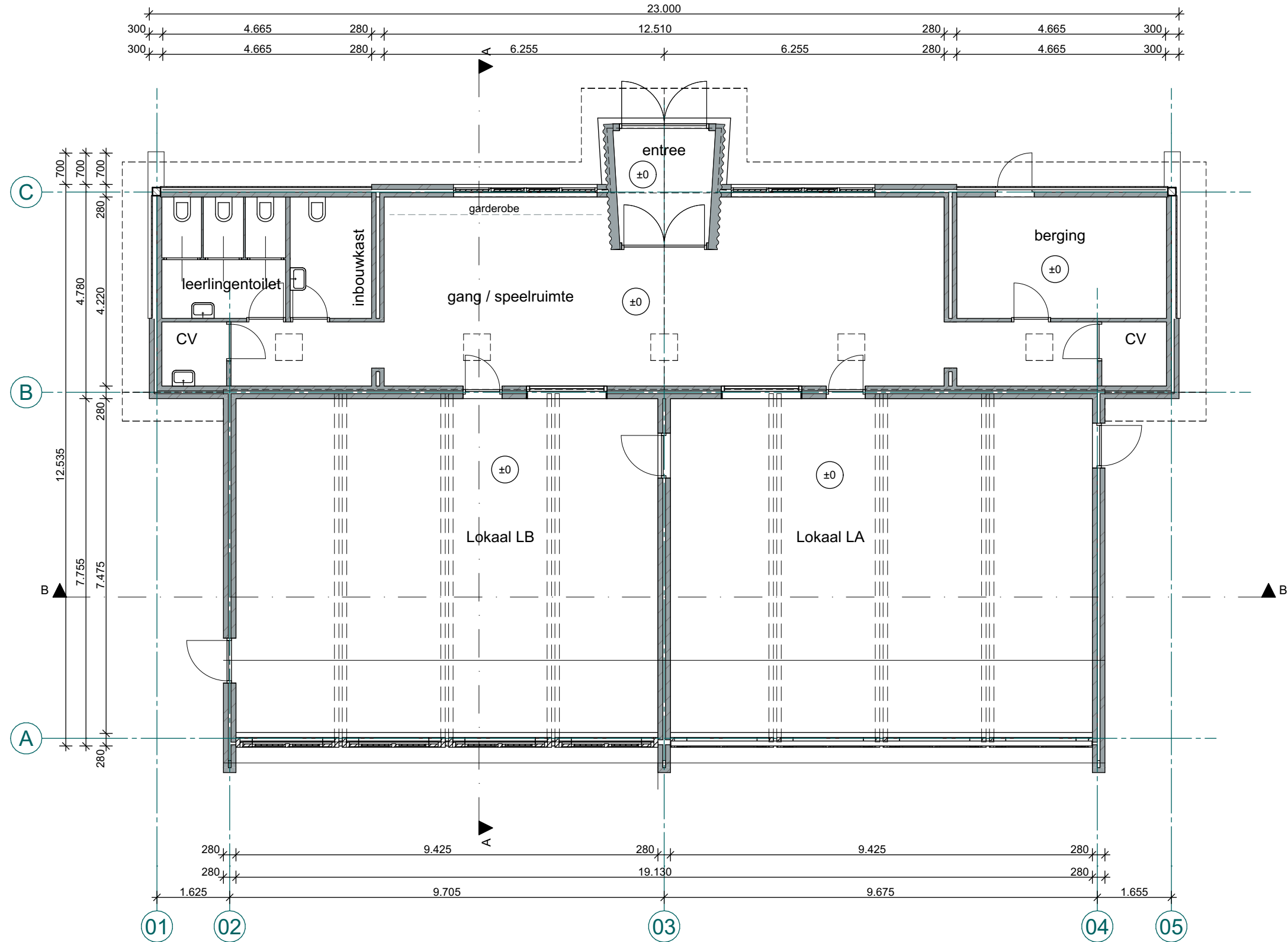
Achtergevel



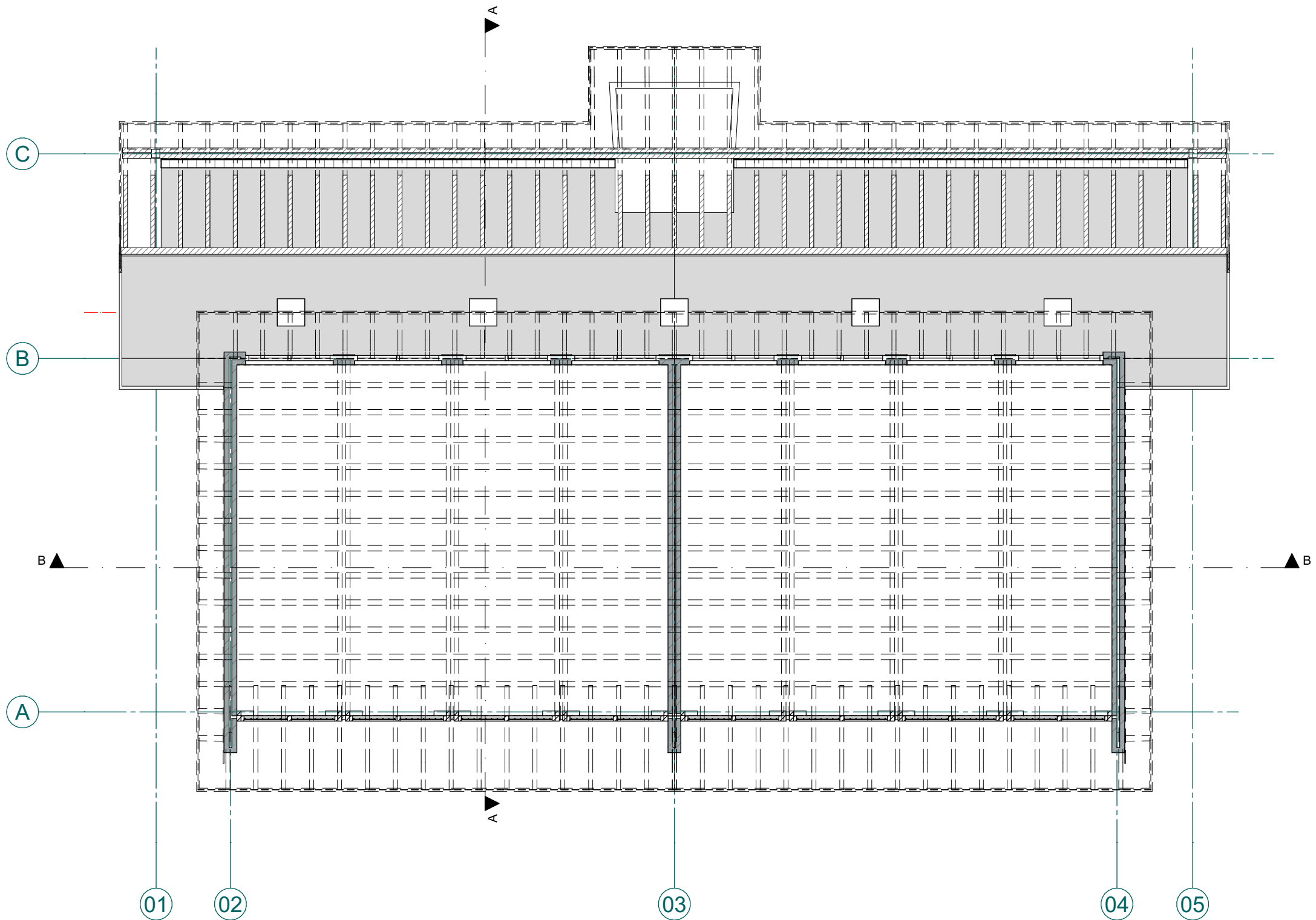
Linkergevel



Doorsnede B-B



Begane grond



1e verdieping

opdrachtgever  
De Haarlemse Montessorischool  
Louise de Colignylaan 3 Haarlem  
project  
De Haarlemse Montessorischool  
revitalisatie gebouwen  
Louise de Colignylaan en de Churchilllaan  
fase  
Voorontwerp  
ontwerper  
Plattegronden, gevels, doorsneden (bestaand)

schaal 1:100	formaat 841x594	getekend	ontwerp
datum 14-07-2023			blad VO-01
datum wijziging			
A: 21-08-2023	F:		
B:	G:		
C:	H:		
D:	I:		
E:	J:		

projectnr.  
22039

**MA·KR**  
Maas Kristinsson Architecten

't Ei 1 7241 AK Lochem +31 (0)573 222 180 info@ma-kr.nl	Henriëtte van Lijndenlaan 1 3703 AS Zeist +31 (0)30 2080 877 www.ma-kr.nl
--	--